



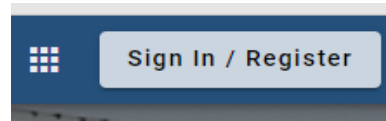
From siouxcenter.org
Select Pay a Bill button

Payment Center


Utility Bill Payment
Credit Card

Pay your utility bill [online](#). Acceptable Credit Cards are Visa, Mastercard, and Discover.
You can also schedule a payment or a re-occurring payment online.

Click on the [online](#)
to go to the login
page.



In upper right corner click on
Sign In/Register to get to Login page



Login

Login

[Forgot password?](#)

Don't have an account? [Register](#)

At the login page

1. Enter your user name and password
2. If you don't have an account
select [Register](#) to create a new
account
(The email address you select will be sent a link
as part of the registration process)

Welcome to our online payments website!

The following services are available:

- [Utility Billing](#)

Select [Utility Billing](#)

[Home](#)
[Manage accounts](#)
[Account detail](#)
[Transactions](#)
[Consumption](#)
[Service requests](#)
[Contact preferences](#)

Manage accounts

Accounts

[+ Add account](#)

11-00000001

Address

1 SE

Last payment

Balance

\$0.00

01-00000000

Address

SE

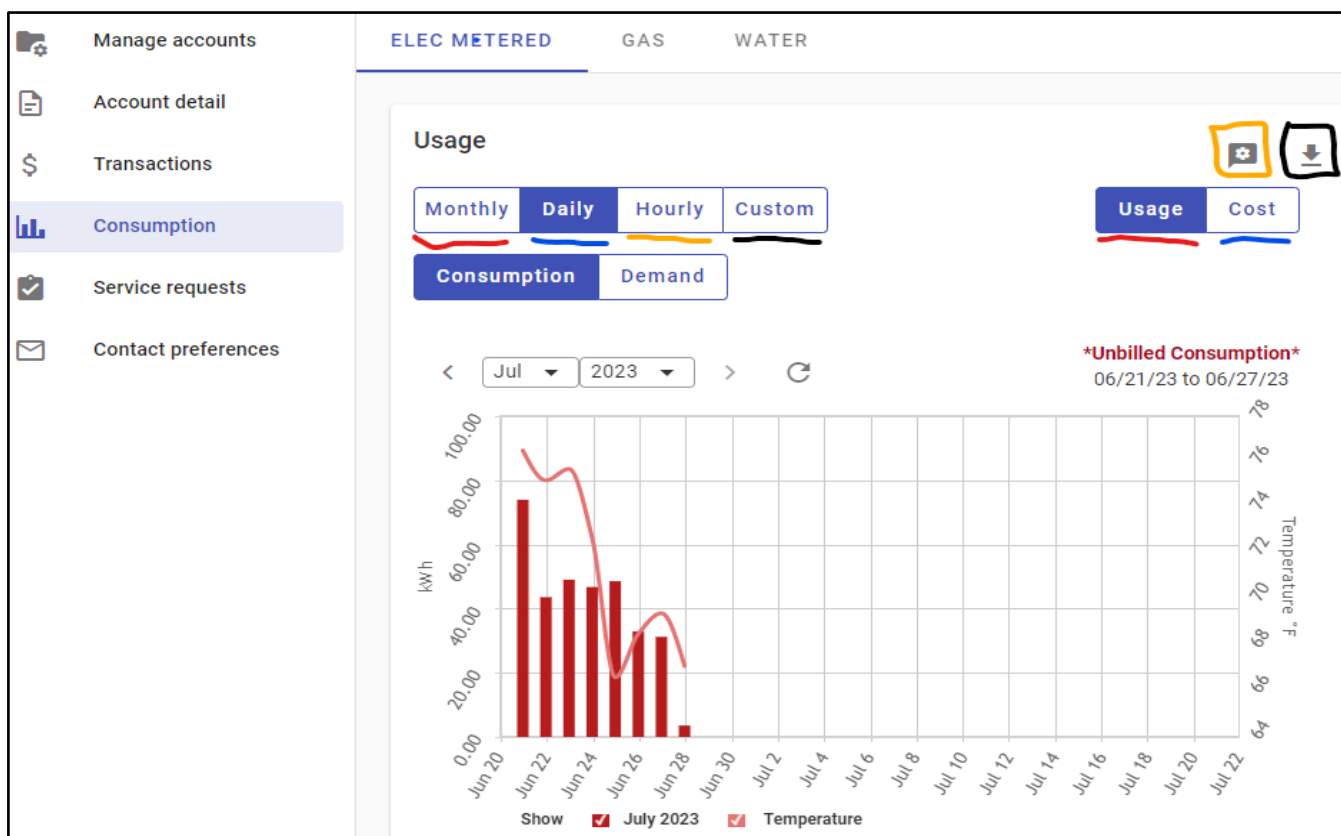
Last payment

Balance

\$0.00

ADD ACCOUNT

If you don't have any accounts
linked to the user name you
will need to Manage Accounts
and select "Add Account"



From Consumption option

You can view usage

Monthly - Shows the last 12 months of data once available.


Daily - Shows the current billing periods activity.

Hourly - Shows the hourly usage for a selected day.

Custom - Shows daily usage for a time frame you select.

Usage - Will display the Electric kwh, Natural Gas CF, or Water gallons used.

Cost - Will show the estimated cost for the amount of usage.

If information is not updated select  to get updated information.



This button will let you set 2 alerts

Select how you would like to be notified can choose between email, voice and text.

"Leak Alerts" will notify you if there is excess water consumption in a 24 hour period.

"Vacation Threshold Alerts" allows you to set threshold amounts when you are away from home.

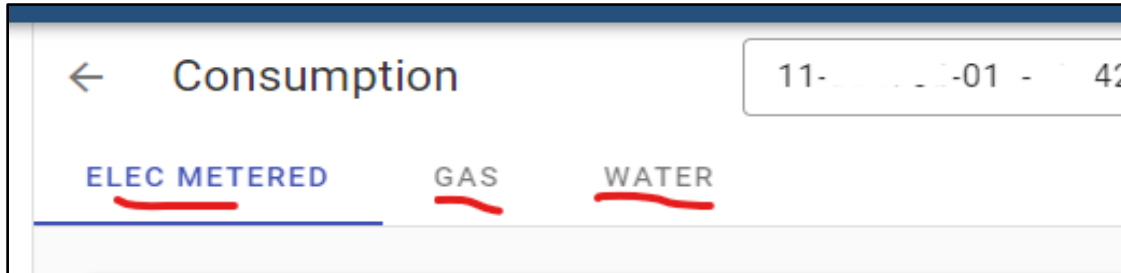
Please note that there is gas and electric usage even when you are not home.

The screenshot shows the 'Consumption alerts' form. It includes sections for 'Email', 'Voice', 'Text', 'Leak Alerts', and 'Vacation Threshold Alerts'. The 'Leak Alerts' section has a checkbox and a description. The 'Vacation Threshold Alerts' section has a checkbox, a description, and fields for 'Start', 'End', and 'Threshold'.



This button will allow you to download into an Excel file the information that is showing on the current graph.

If you scroll over the graph lines you can drill down to show more detailed data. It will also show usage, dollar amount, temperature and rainfall information.



You can select each utility service that you are receiving. If you have multiple meters each meter will be shown with the meter number.

Billing
Current billing period
Day 8 of Current Billing Period
Meter last reported
06/28/2023 - 12:00 AM
Read: 37570.68

Weekly comparison
You used **116.23 kWh** this week,
which cost **\$11.71** (\$23.90 less than
last week's total)

Cost this week	\$11.71
Cost last week	\$35.61
Usage this week	116.23 kWh
Usage last week	353.45 kWh

From the consumption option you can view summary information about current billing period, last time meter information was received, and weekly comparison information.

NOTE - If you are viewing from the Home screen this information will not appear.

Home | Manage accounts | Account detail | Transactions | Consumption | Service requests | **Contact preferences**

Contact preferences

Sign up for e-Billing
Please enter in the email address below that you would like your utility bill sent to. Once you click on the submit button a confirmation email will be emailed to you.
To make sure you receive your bill each month please add the email address beckyg@siouxcenter.org to your email contact list.
You can change your preferences at anytime.
Thank you for signing up for e-statements.

☐ Apply to all accounts

... AVE 01 00

Sign up for e-Billing

☐ Email

Optional - Sign up for emailed bill

Go to Contact Preferences to sign-up to have your bill emailed each month