



# STEERING COMMITTEE STREETScape PLANNING OBJECTIVES

## CORRIDOR

- Focus detailed improvements in **Downtown** and **Residential** sections
- Appropriate to construct walk on only one side of street in **Industrial/Commercial**
- Construct new walks at 6-8’ wide for bikes + pedestrians where only one walk occurs
- Incorporate curb bump outs to shorten ped crossing distances in **Downtown** section

## MEDIANS

- Incorporate landscape plantings in all medians over 8’ wide
- Medians less than 8’ wide should be colored or stamped concrete, with stone elements

## CROSSWALKS

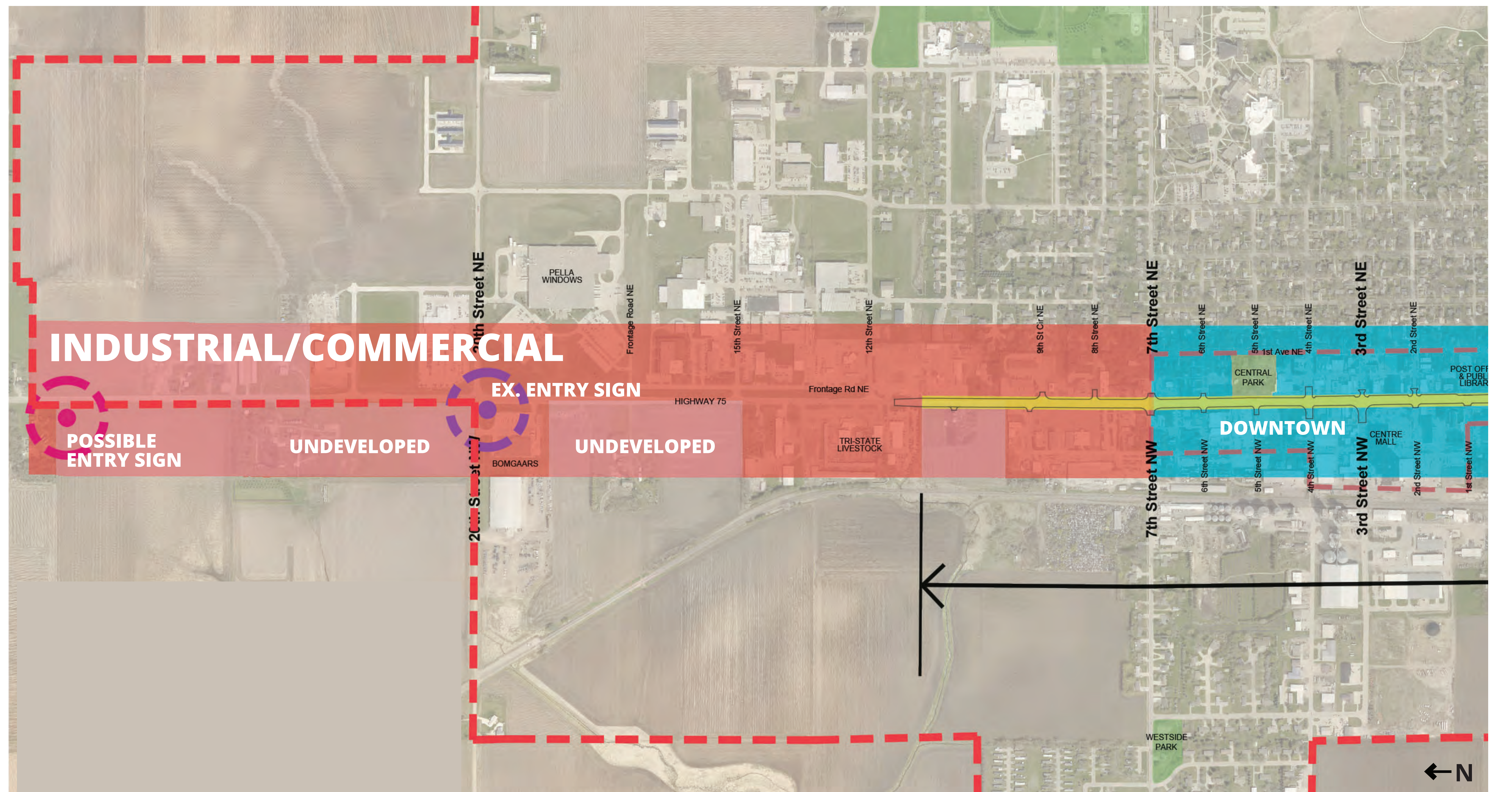
- Include pedestrian refuge islands at all crosswalk locations where appropriate
- Incorporate flashing lights at important crossings where signalization isn’t occurring
- Incorporate colored crosswalks in **Downtown** and **Residential** sections

## AMENITIES

- Construct new entry signs closer to the edges of city limits
- Build horizontal, stone entry signs with tree plantings
- Incorporate limited site furnishings in **Downtown** section
- Vehicular wayfinding signage is important throughout corridor
- Pedestrian wayfinding signage is important in **Downtown** and **Residential** sections
- City should install a landscape buffer between the highway and residential housing
- Include pedestrian scaled lighting in **Downtown** and **Residential** sections
- Incorporate additional tree plantings in **Residential** sections
- Install low maintenance plantings with seasonal interest



# INDUSTRIAL/COMMERCIAL

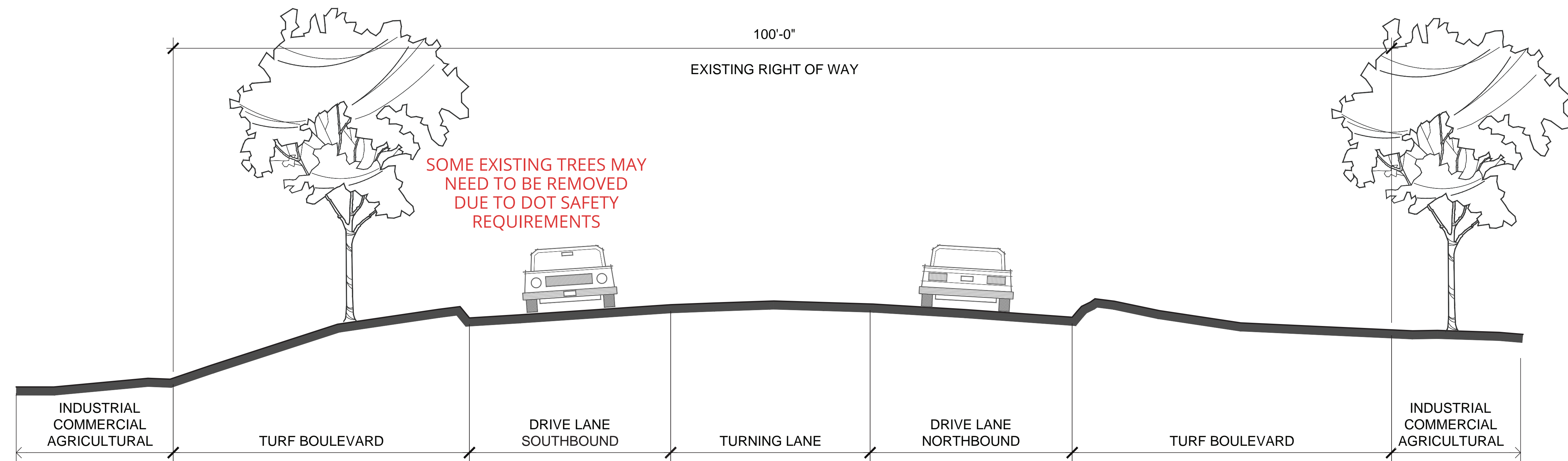




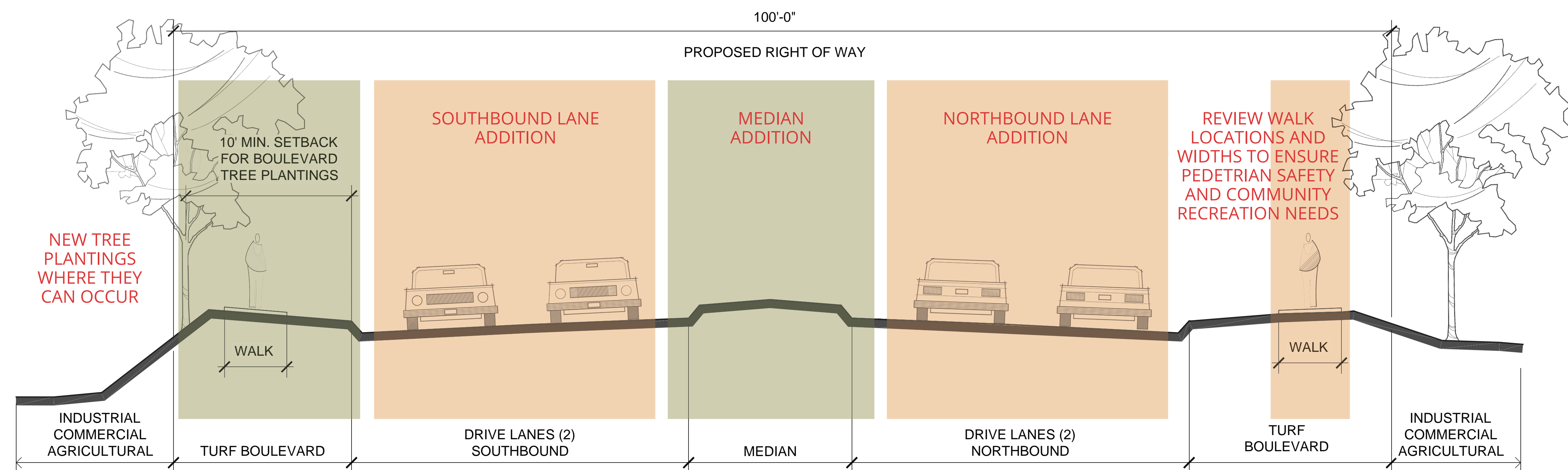




# INDUSTRIAL/COMMERCIAL



Typical **EXISTING** road section



Typical **PROPOSED** road section



# INDUSTRIAL/COMMERCIAL



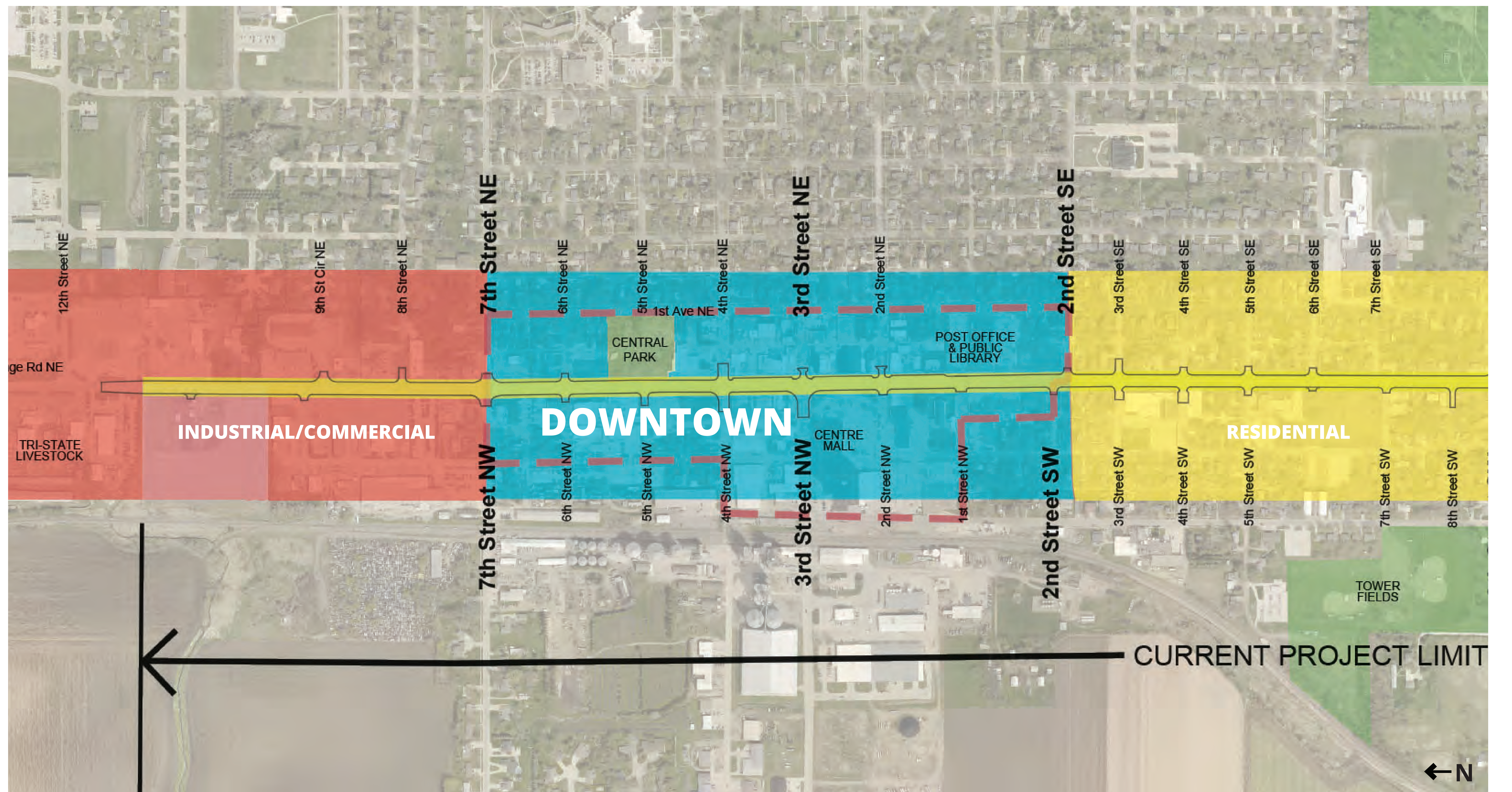


# INDUSTRIAL/COMMERCIAL





# DOWNTOWN

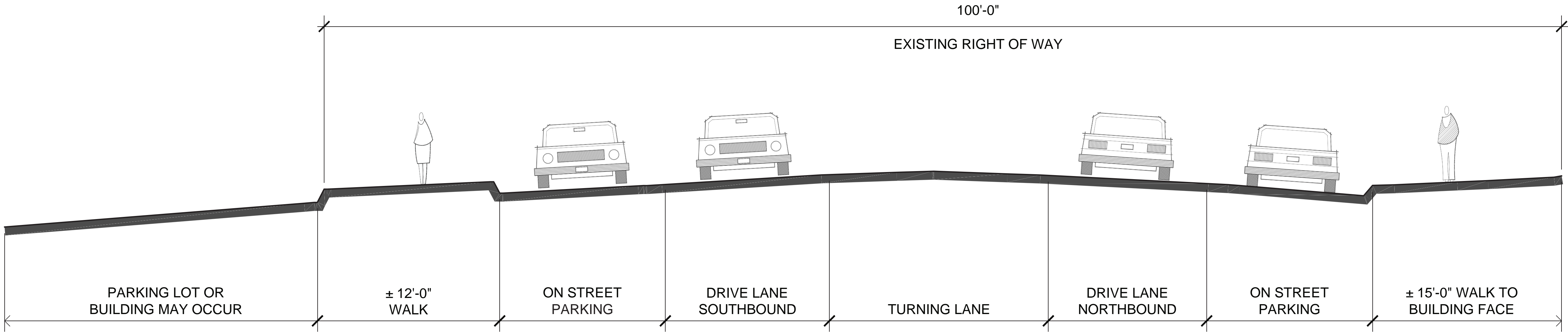




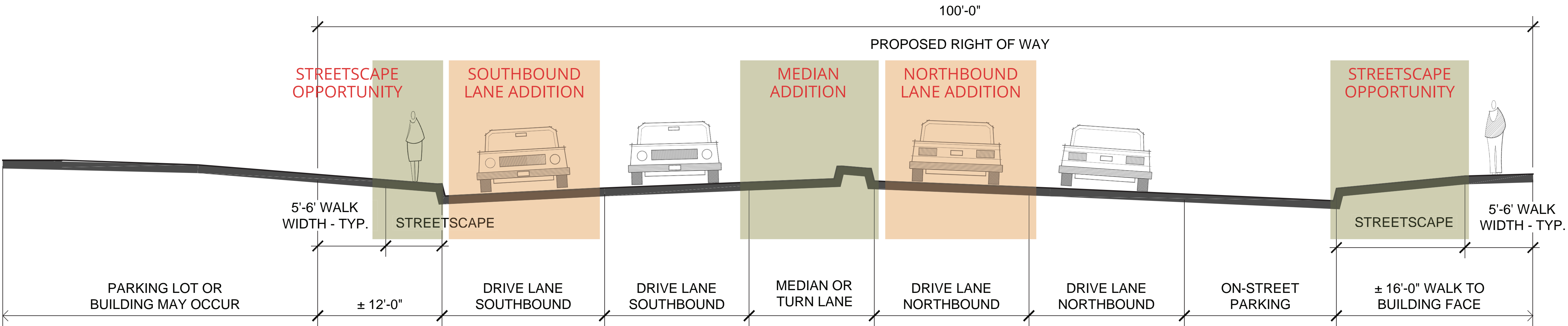




# DOWNTOWN



Typical **EXISTING** road section



Typical **PROPOSED** road section



# DOWNTOWN



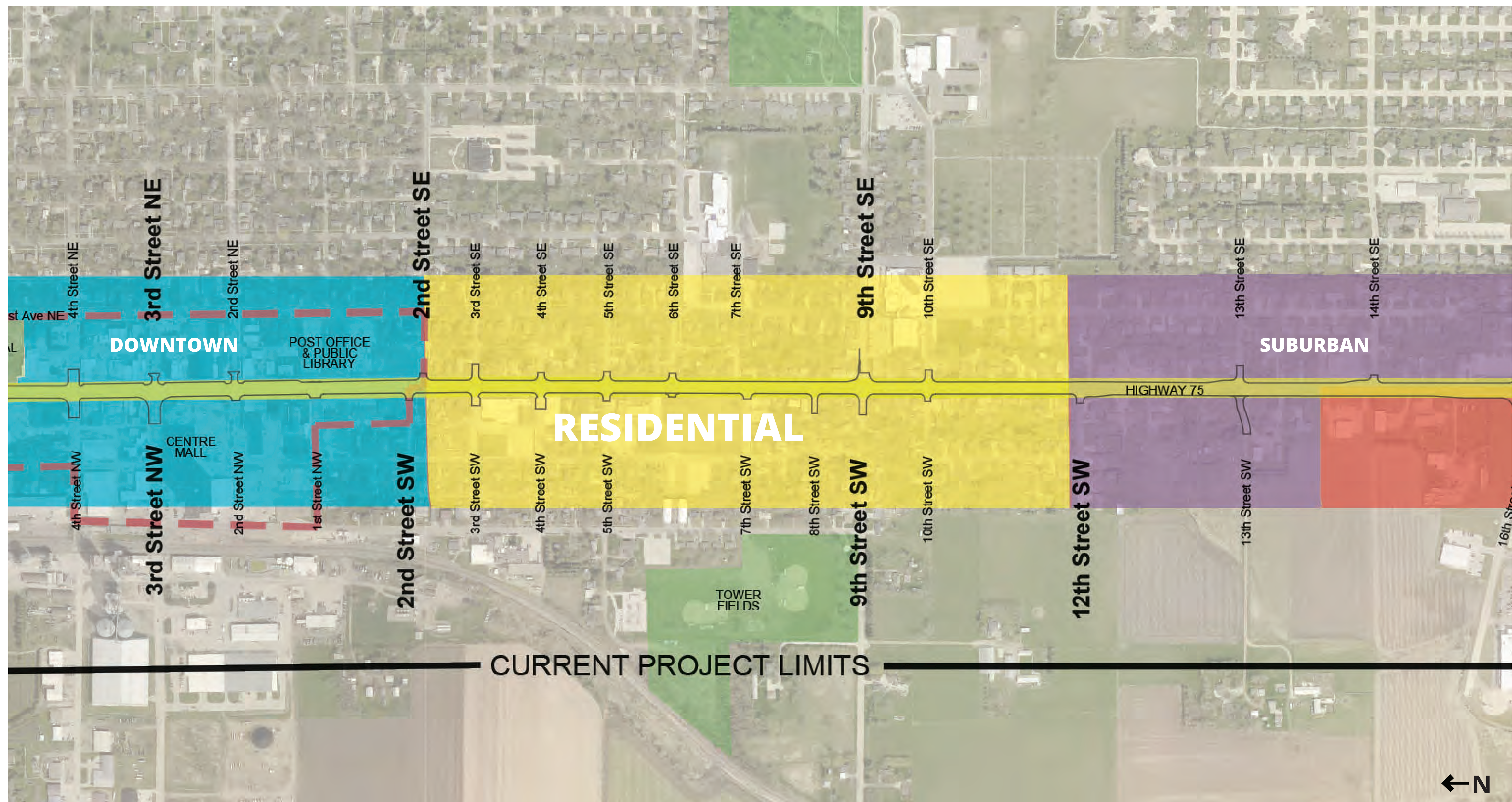


# DOWNTOWN

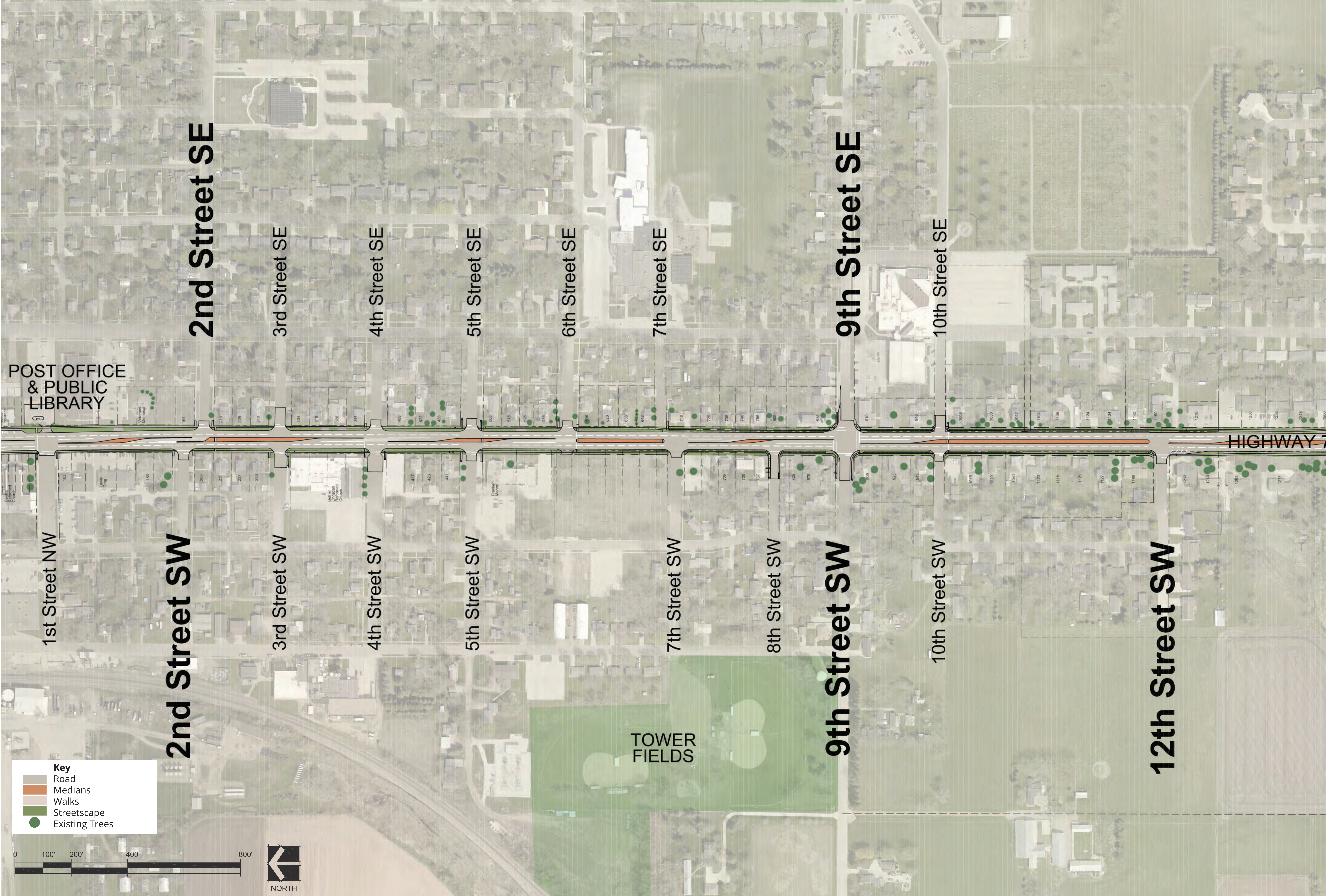




# RESIDENTIAL

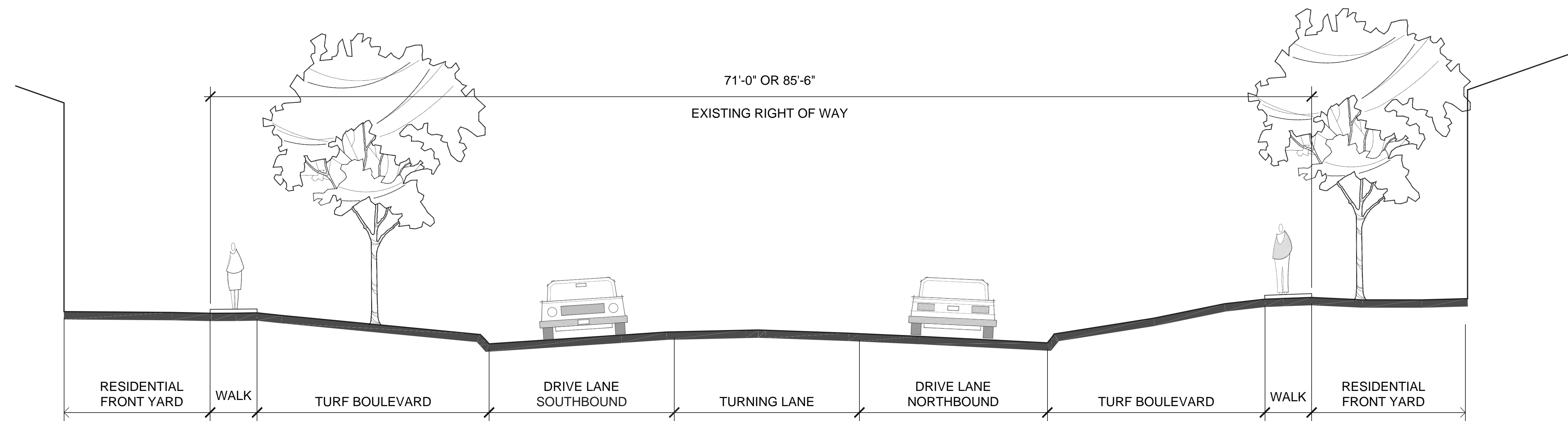




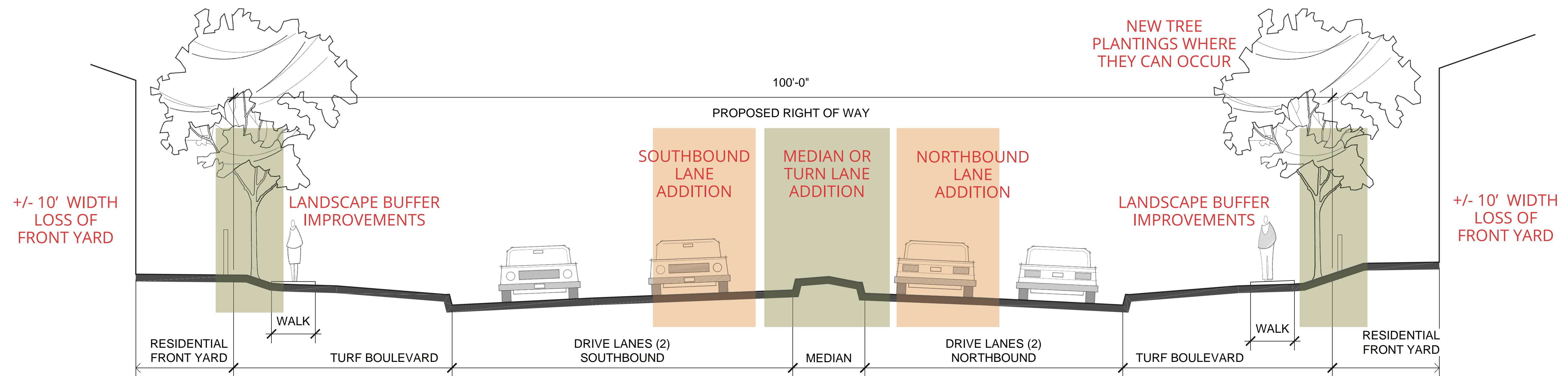




# RESIDENTIAL



Typical **EXISTING** road section



Typical **PROPOSED** road section



# RESIDENTIAL



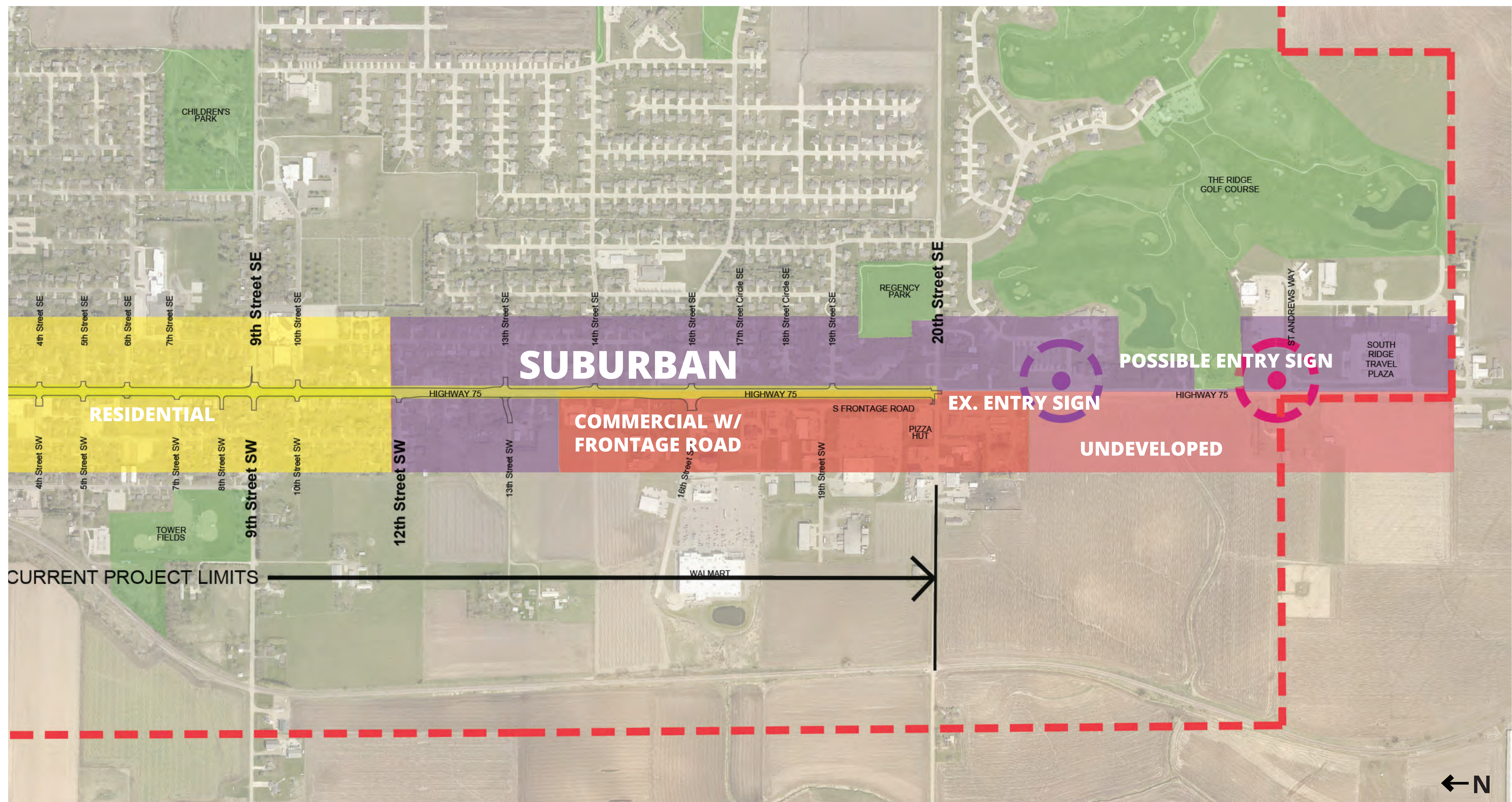


# RESIDENTIAL

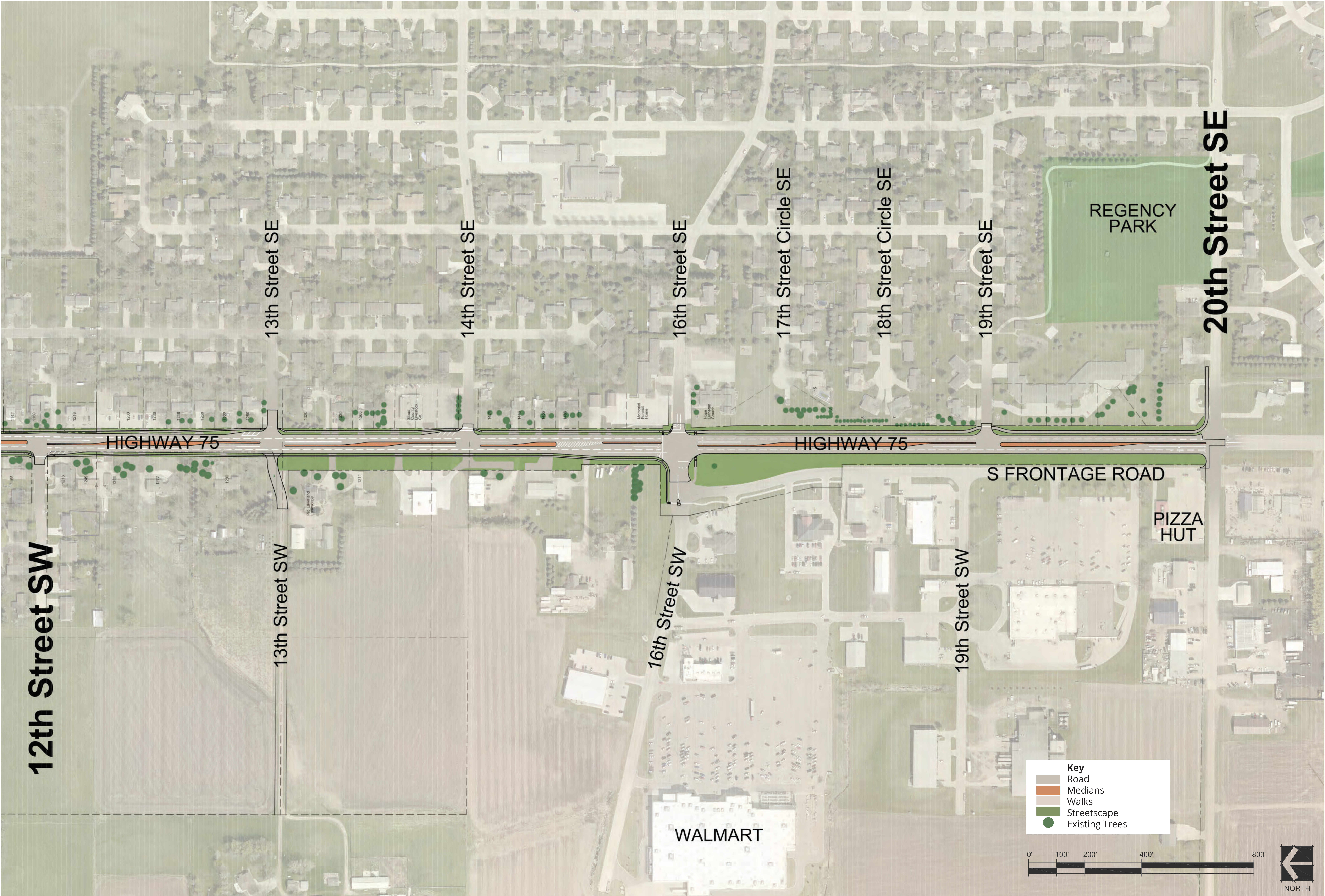




# SUBURBAN

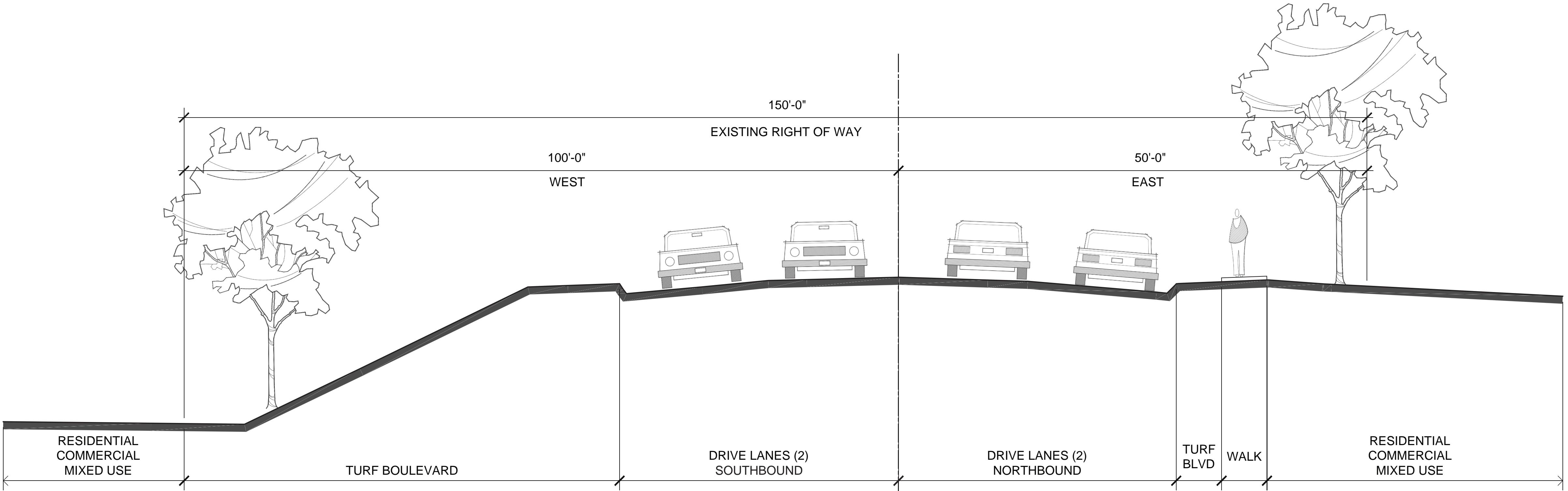




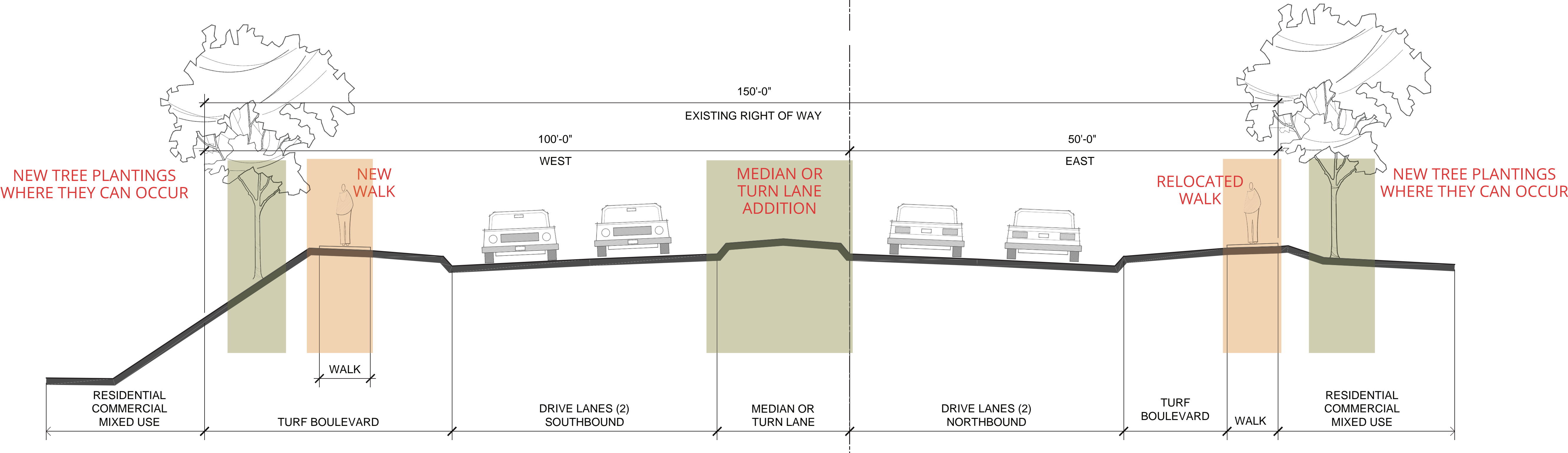




# SUBURBAN



Typical **EXISTING** road section



Typical **PROPOSED** road section

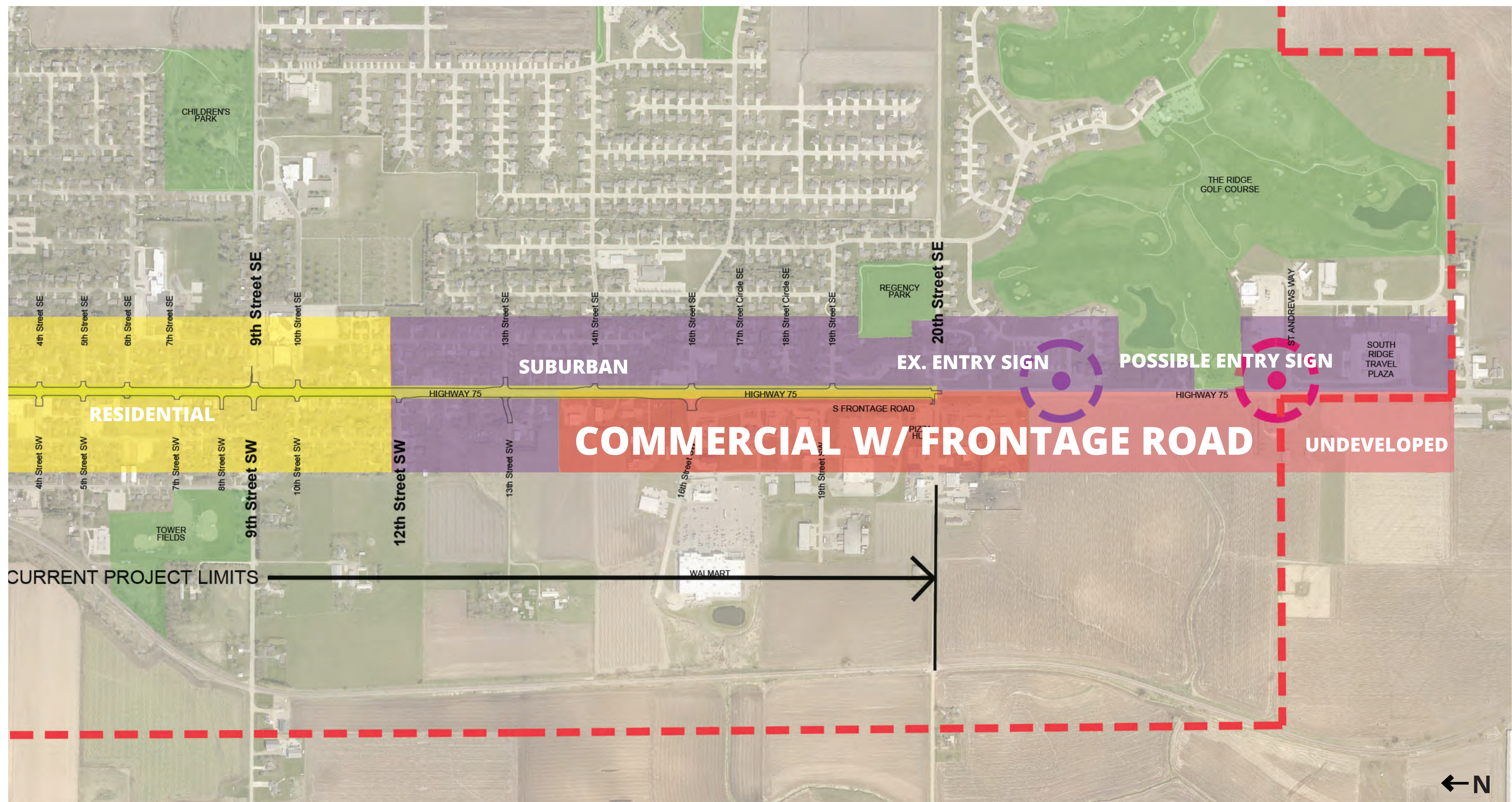


# SUBURBAN



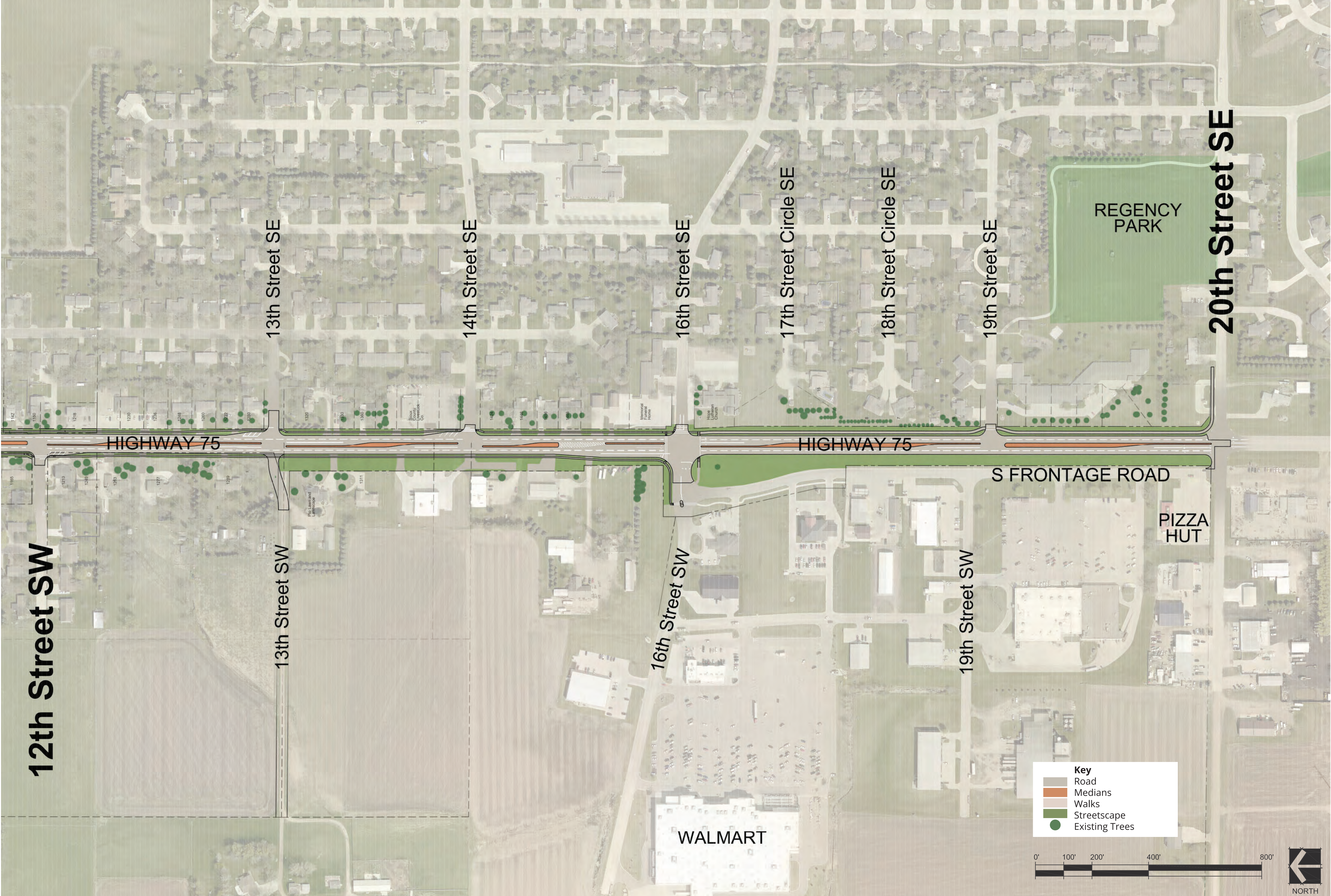


# COMMERCIAL WITH FRONTAGE ROAD



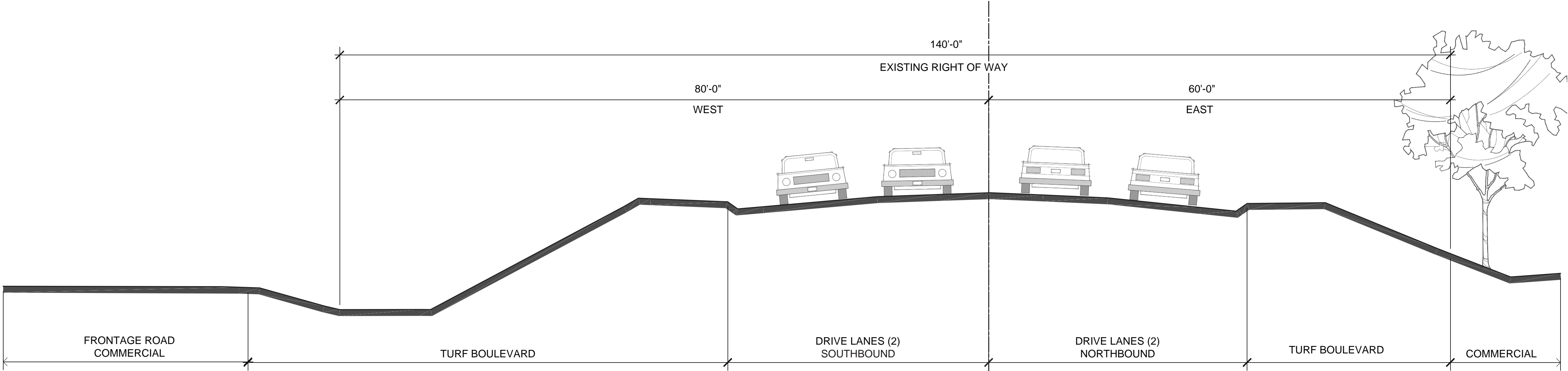


# COMMERCIAL WITH FRONTAGE ROAD

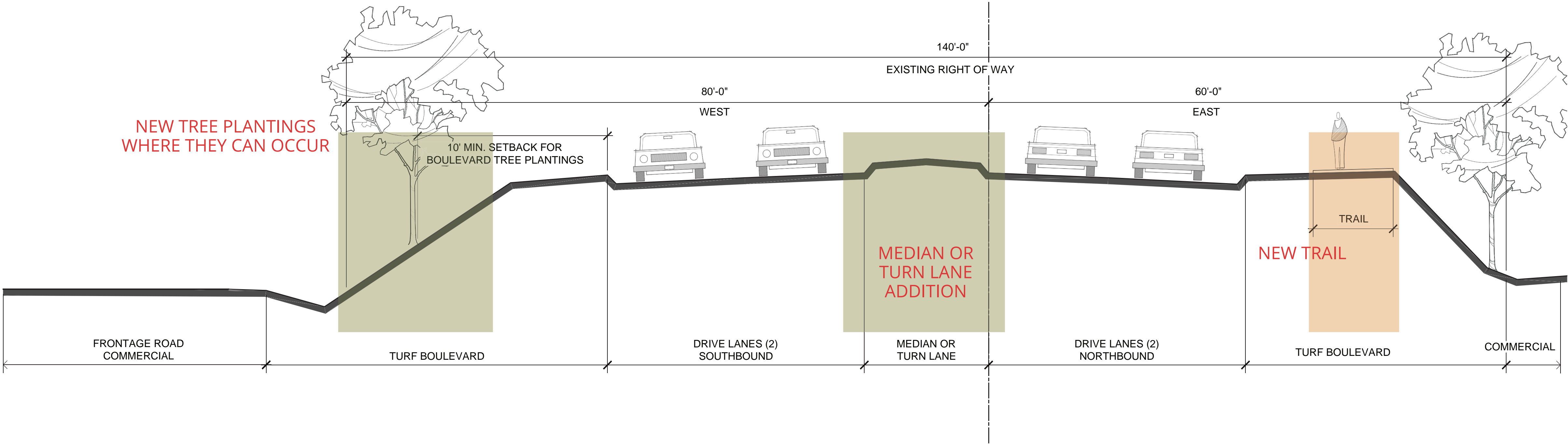




# COMMERCIAL WITH FRONTAGE ROAD



Typical **EXISTING** road section



Typical **PROPOSED** road section

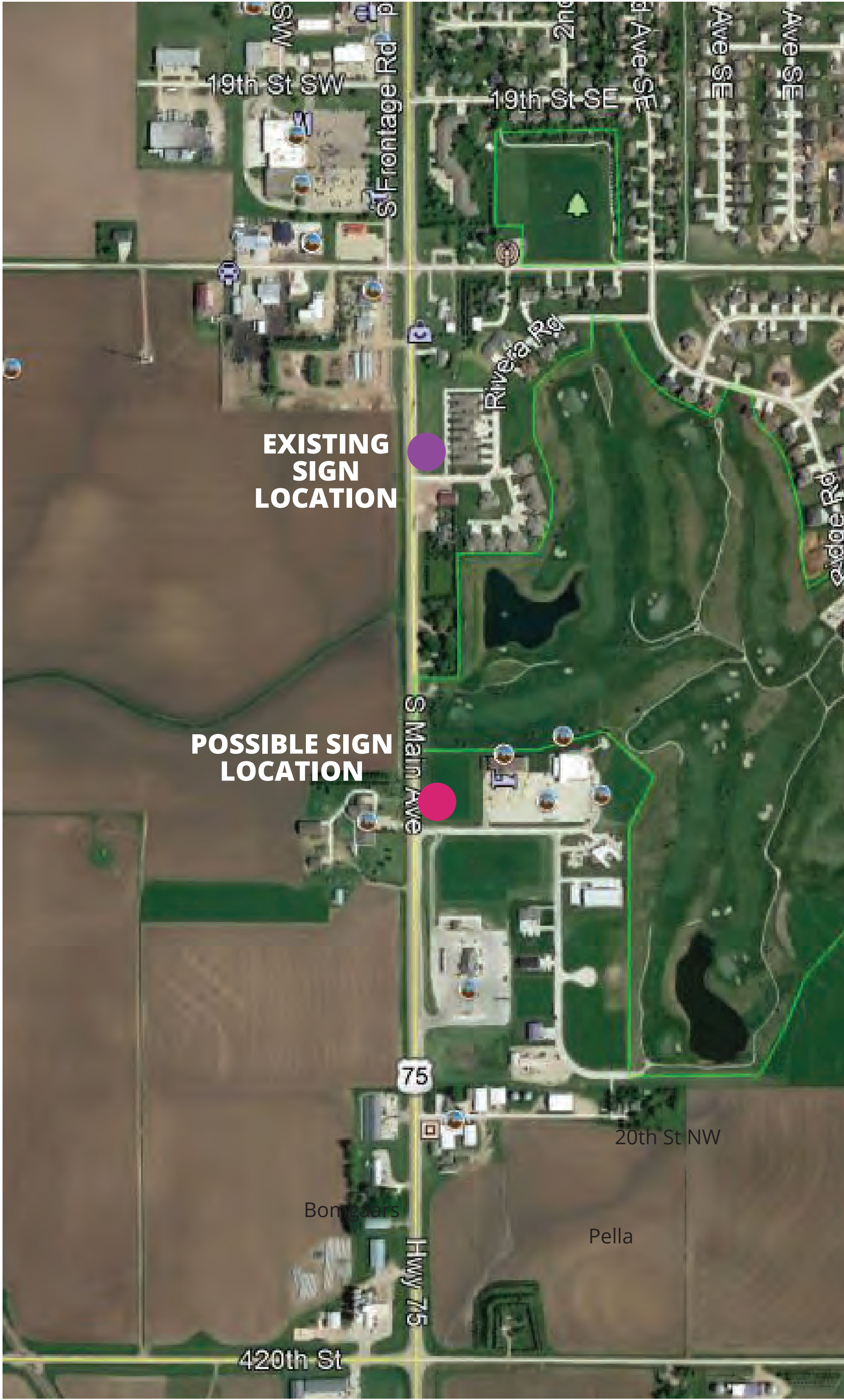


# ENTRY

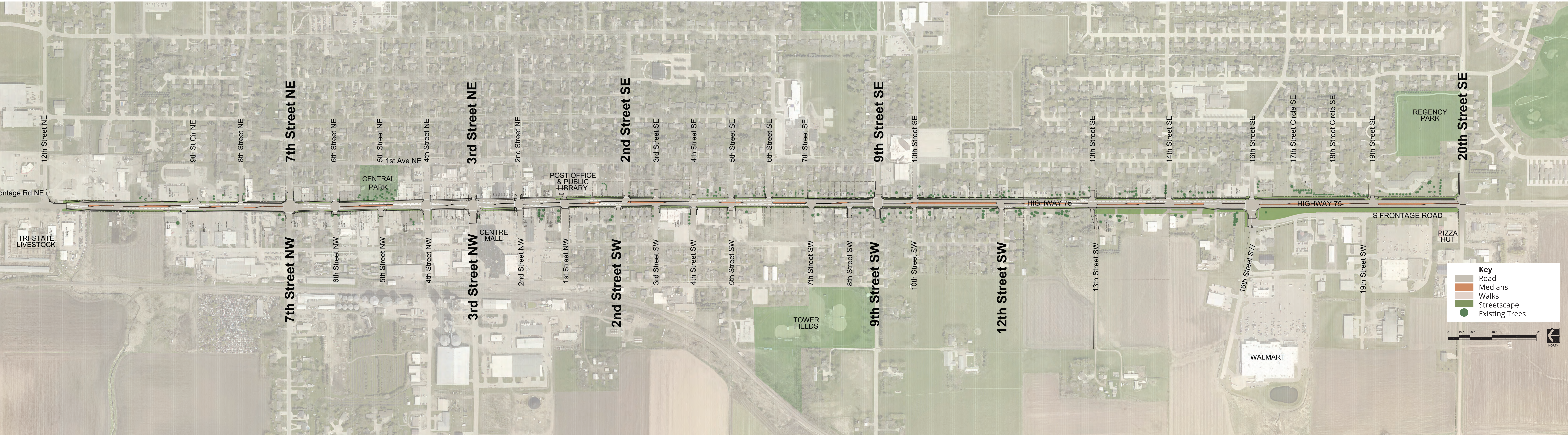




# ENTRY









# Highway 75

## Anticipated Phases

Seek DOT partnership  
Preliminary cost studies and design



Receive notice of funding from DOT



Study project impacts  
Gather and incorporate public feedback  
Engage stakeholder committee  
Analyze design options

Current

Refine design based on studies and input  
Define roadway width and features  
Gather public feedback

Current-  
2021

Final design  
Right of way appraisals  
Purchase right of way/easements

2021-22

Construction  
Create alternate traffic/pedestrian routes  
during construction

2023-24

Project complete and open to public  
Introduce all users to new features

2025

Ongoing communication with property owners and the public



